

Ar m s t r o n g P A r t s



Parts Index

Parts	Page
Ball Valves	375
Blower Control Centers	375
Blower Housings with Wheels	375
Blower Motors	376
Blower Relays	375
Blower Wheels	375
Burners	377
Capacitors	377
Capillary Tube Assembly	377
Circuit Breakers	377
Compressors Bristol Copeland Tecumseh	385
Compressor Plugs	384
Condenser Fan Motors	377
Contactors	378
Control Boards	378
Defrost Controls	378
Door Switches	378
Drain Pans For Coils	378
Electrode Wires	379
Expansion Valves	378
Fan Blades	379
Filter Dryer	379
Fossil Fuel Kits	379
Gas Valves	379
Heat Exchangers	379
Heat Pump Parts	380
Heat Sensors	380
Heat Strips	380
High Pressure Switches	380
Ignition Controls	380
Induced Draft Motors	381
Limit Switches	381
Low Ambient Kit	381
LP Kits	381
Orifices	382
Pilot Assemblies	382
Pressure Switches	382
Relays	382
Return Air Bases	382
Reversing Valve	383
Rollout / Flue Stack Switches	383
Sensor & Electrode	383
Sequencers	383
Service Reference Handbooks	383
Service Valves	383
Start Assist Device	384
Thermal Fuse	384
Thermostats & Twinning Kit	384
Transformer / Relay	384
Transformers	384
Wiring Harness	384



BALL VALVES

Locke#	Armstrong#	Description
L2957	R100609-01	3/4 x 3/4 Ball Valve for 2SHP13 Units
L2958	R100609-02	7/8 x 7/8 Ball Valve for 2SCU13 + 2SHP13 Units

BLOWER CONTROL CENTERS

Locke#	Armstrong#	Description
L0365	R39029B002	Blower control center
L0726	40403-003	Blower control center
L0727	39971B001	Blower control center
L4554	45692-001	Blower control center

BLOWER HOUSINGS WITH WHEELS

Locke#	Armstrong#	Description
L5792	R76700377	10x6 Housing with Wheel
L5793	R76700378	12x8 Housing with Wheel
L5794	R76700379	12x9 Housing with Wheel

BLOWER RELAYS

Locke#	Armstrong#	Description
L4784	45899-001	Time Delay
L4905	67K65	Blower Relay for CHA, GCSO LGA Package Units and AHH, AHV, CBO CBH Air Handlers
L5813	R65030802	Relay for EFV16CCP
L5932	44350-004	Blower Relay for EFC

BLOWER WHEELS

Locke#	Armstrong#	Description
L4779	44351-019	Blower Wheel 9" X 6"
L1038	02592A002	Blower Wheel 9" X 9½"
L1018	02592A004	Blower Wheel 10" X 6" 98M74
L1019	02592A003	Blower Wheel 10" X 8" 47K28
L4780	76728100	Blower Wheel 10" X 8"
L4881	02592A023	Blower Wheel 10" X 9" 47K30
L1084	R02592A035	Blower Wheel 10" X 9½" 19W92
L1020	02592A006	Blower Wheel 10" X 10" 76K01
L4781	76728200	Blower Wheel 10" X 10"
L1021	02592A013	Blower Wheel 11.8" X 9.5" 86H46
L4860	02592A024	Blower Wheel 12" x 10" 47K31

HVAC

Ar m s t r o n g P A r t s



BLOWER MOTORS

Locke#	Armstrong#	Description
L0355	AMOTR496	Variable Speed Motor Kit forEFV12
L0357	AMOTR498	Variable Speed Motor Kit forEFV16
L0358	AMOTR499	Variable Speed Motor Kit forEFV20
L2913	R76700380	1/4 HP, 825 RPM, 1.4 amp, for BCS2M18C00NA1P-1
L2914	R76700381	1/4 HP, 825 RPM, 1.4 amp, for BCS2M24C00NA1P-1
L2915	R76700382	1/4 HP, 825 RPM, 1.5 amp, for BCS2M30C00NA1P-1
L2916	R76700383	1/3 HP, 825 RPM, 1.7 amp, for BCS2M36C00NA1P-1
L2917	R76700384	1/3 HP, 825 RPM, 1.8 amp, for BCS2M42C00NA1P-1
L2918	R76700385	1/2 HP, 825 RPM, 2.5 amp, for BCS2M48C00NA1P-1
L2919	R76700386	1/2 HP, 825 RPM, 3.9 amp, for BCS2M60C00NA1P-1
L2930	R100202-01	Blower Motor
L2931	47475-001	3/4HP Blower Motor
L2985	98M88 (R100155-01)	Induced draft blower motor used in: 2PGE13E24068P-1, 2PGE13E30068P-1, 2PGE13E36068P-1, 2PGE13E36090P-1, 2PGE13E42083P-1, 2PGE13E42110P-1, 2PGE13E48138P-1, 2PGE13E60138P-1, 4PGE15E24068LP-1, 4PGE15E30068LP-1, 4PGE15E36068LP-1, 4PGE15E36090LP-1, 4PGE15E42083LP-1, 4PGE15E42110LP-1, 4PGE15E48138LP-1, 4PGE15E60138LP-1
L4232	AMOTR582-06428D382	Variable Speed Motor Kit (AOSmith to GE) for GU95A90V20, GU95A112V20 & GU95A125V20
L4295	46132-001	1/3 hp, 115v, Variable Speed Motor Kit for G2D80BT075V14B-1 & G2D80BT100V14B-1
L4296	46132-002	1/2 hp, 115v, Variable Speed Motor Kit for G2D80BT100V20C-1, G2D80BT125V20C-1 & G2D80BT150V20D-1
L4297	46132-003	3/4 hp, 115v, Variable Speed Motor Kit for G2D80BT050V12B-1
L4298	46132-005	1/2 hp, 115v, Variable Speed Motor Kit for G2D95BT060V14B-1
L4299	46132-004	3/4 hp, 115v, Variable Speed Motor Kit for G2D95BT080V16C-1
L4234	AMOTR171-1	Motor Adapter Kit for 3 TonAO Smith PHP12

BLOWER MOTORS

Locke#	Armstrong#	Description
L4250	45606-001	1/2HP Variable Speed Motor G2D95AC / U40V14B
L4251	45607-001	1/2HP Variable Speed Motor G2D95AC / U60V14B
L4252	45608-001	3/4HP Variable Speed Motor G2D95AC / U80V16C
L4253	45609-001	1HP Variable Speed Motor G2D95A / U80/100/125
L4546	45480-001	Blower Motor for CG90UA, G1D91UA, G1D93AC, G1D93AU 2000 CFM Furnaces
L4561	47465-001	1/2 HP Blower Motor for G1N Furnaces
L4651	44306-001	1/4 HP Motor for SX Furnace 1000 CFM
L4652	40387-001	3/4 HP Motor for SX Furnace 2000 CFM
L4653	40416-001	1/2 HP Motor for SX Furnace2000 CFM
L4736	44306-001	1/4 HP Blower Motor
L4738	44308-001	1/2 HP Blower Motor
L4776	44351-026	1/3 HP Motor for EFC12
L4777	44351-027	1/2 HP Motor for EFC14
L4778	44351-028	3/4 HP Motor for EFC16 & 20
L4793	47464-001	GU93A090D20 90 BTU, 2000 CFM
L4794	44628-001	3/4 HP Motor for GUH80E,2000 CFM
L4849	47543-001	Motor for PHP, PGE 10 2-3 Ton
L4850	41227-001	Motor for PHP, PGE 3.5 Ton
L4853	47476-001	.9 HP Motor for PHP & PGE4-5 Ton
L4899	23G40-01	2 Hp, 3 Phase Evaporator Motor
L4901	23G41	3 HP, 3 Phase Evaporator Motor
L5750	98M39	1/3 HP Variable Speed Motor
L5990	65047500	1/4 HP Motor for BCU-BCZAir Handler
L5993	76761900	1/2 HP Motor for BCU-BCZAir Handler

HVAC

Ar m s t r o n g P A r t s



BURNERS

Locke#	Armstrong#	Description
L4730	39271B001	Endshot Burner for SX80 & SX90
L4884	41G18	Burner for GRTC Package Unit
L5845	37895C002	Burner with Pilot Bracket
L5885	02708C024	Right End Burner
L5887	37895C001	Left End (Crossover) Burner
L5968	06428D403	6 Burner Cover Kit

CAPACITORS

Locke#	Armstrong#	Description
L0792	38514D008	45/7.5 MFD 440V Capacitor
L1308	38514D019	50/7.5 MFD 440V Capacitor
L1309	38514D018	50/5 MFD 370V Capacitor
L2932	R100335-03	30-5 MFD 440v Capacitor
L2933	R100335-26	80/10 MFD 370v Capacitor
L2934	R100335-31	50/5 MFD 440v Capacitor
L2935	R100335-32	55/10 MFD 440v Capacitor
L2936	R48037-010	55/5 MFD 370v Capacitor
L2941	R100335-17	60/75 440V Capacitor
L4608	38514D004	35/5 MFD 370V Capacitor
L4612	38514D002	25/5 MFD 370V Capacitor
L4613	38514D005	40/5 MFD 370V Capacitor
L4614	38514D006	40/5 MFD 440V Capacitor
L4615	38514D010	35/5 MFD 440V Capacitor
L4646	38514D011	45/5 MFD 370V Capacitor
L4654	38514D015	45/5 MFD 440v Capacitor
L4656	38514D021	70/5 MFD 370V Capacitor
L4672	38514D009	35/7.5 MFD 440V Capacitor
L4673	38514D014	80/7.5 MFD 370V Capacitor
L4675	38514D012	55/7.5 M F D 440V Capacitor
L4692	38514D016	60/5 MFD 370V Capacitor
L4693	38514D013	60/7.5 MFD 370V Capacitor
L4739	38514D003	30/5 MFD 370V Capacitor
L4764	38514D007	40/7.5 MFD 440V Capacitor
L4785	38514D017	80/5 MFD 370V Capacitor
L5602	89M87	60/10 440v Capacitor
L5837	89M90	70/10 370v Round
L5843	38514D022	60/5 MFD 440v Capacitor
L5858	41W17	65/5 MFD @ 370V

CAPILLARY TUBE ASSEMBLY

Locke#	Armstrong#	Description
L4770	S41833-002	Capillary tube assem. for 5T 3Ph PGE units

CIRCUIT BREAKERS

Locke#	Armstrong#	Description
L2912	R110000226	45 Amp Circuit Breaker
L2942	R110000184	60 Amp Circuit Breaker
L2943	R110000183	30 Amp Circuit Breaker
L5763	40923-002	30 Amp Circuit Breaker
L5764	40923-003	60 Amp Circuit Breaker
L5940	44352-001	30 Amp Circuit Breaker
L5949	44352-003	60 Amp Circuit Breaker

COMFORT ALERT MODULE

Locke#	Armstrong#	Description
L5701	85M53	For: 4SCU16LT124,136,148,160P 4SHP16LT124,136,148,160P-1 4SHP16LT124,136,148,160P-2 4SCU18LT124,136,148,160P-1 4SHP18LT124,136,148,160P-1

CONDENSER FAN MOTORS

Locke#	Armstrong#	Description
L2920	R100483-01	1/3 HP Condenser Motor
L2921	R100483-02	1/5 HP Condenser Motor
L2922	R100483-03	1/4 HP Condenser Motor
L2923	R100483-04	1/10 HP Condenser Motor
L2924	R100483-05	1/4 HP Condenser Motor
L2937	R100198-01	Condenser Motor 98M89
L2938	R100201-01	Condenser Motor
L4096	27J07	1/2 HP 1075 RPM 460v Motor
L4097	79J82	1/3 HP 1075 RPM 460v Motor
L4380	45729-001	Condenser Motor for CCU10D42A & B
L4851	41282-001	1/8 HP Motor
L4852	41254-001	1/4 HP Motor
L4868	42521-001	1/5 HP Condenser Motor
L4869	42548-001	1/4 HP Condenser Motor
L5027	45515-001	1/8 HP Condenser Motor for CCU10A12, 18 & 24A
L5068	35035B001	1/5 HP - 1075 RPM 230v Motor
L5069	40638-001	1/3 HP - 825 RPM 230v Motor

HVAC

Ar m s t r o n g P A r t s



CONTACTORS

Locke#	Armstrong#	Description
L1105	07535C007	40 Amp Contactor
L1112	07535C001	25 Amp Contactor
L1113	07535C006	50 Amp Contactor
L1114	R100438-02	35 AMP SPST Contactor

CONTROL BOARDS

Locke#	Armstrong#	Description
L4907	71M28	Control Boards For TGA, TCA, THA 90-120-150 models

DEFROST CONTROLS

Locke#	Armstrong#	Used In
L5703	42W04	4HP14L18,24,30P-2A,3A 4HP14L36,42,48,60P-2A 4SHP16LT124,136,148,160P-2 4SHP16LT124P-3
L5704	28W71	4HP14L18,24,30P-2A,3A 4HP14L36,42,48,60P-2A

DOOR SWITCHES

Locke#	Armstrong#	Description
L1016	45610-001	Door Switch for SX Furnace
L4782	99089100	Door Switch for EFC Air handler

DRAIN PANS FOR COILS

Locke#	Armstrong#	Description
L7755	40719-019-0767027-00	C2E 18A-1, 24A-1, 30A-1, 36A-1
L7757	40719-021-0767041-00	C2E 24C-1, 30C-1, 36C-1, 46C-1
L7760	40719-024-0767521-00	C2E 36D, 46D, 58D
L7765	44564-001	Drain Pan 4-6T Package 52M11
L7766	44565-001	Drain Pan 2-3.5T Package
L7761	0767935-00	C2E 18A-2, 24A-2, 30A-2, 36A-2
L7762	0767937-00	C2E 24B-2, 30B-2, 36B-2, 46B-2
L7763	0767938-00	C2E 24C-2, 30C-2, 36C-2, 46C-2
L7758	0767045-00	21" Vert. C2E 58C only Drain Pan
L7767	R76700502	Pan for EC1P49CG & EC1P62CG

EXPANSION VALVES

Locke#	Armstrong#	Description
L2759	97M84	100481-05 Expansion Valve
L2928	R100481-02	Expansion Valve for 2SHP13 Units
L2929	R100481-03	Expansion Valve for 2SHP13 Units
L2959	R47267001	Expansion Valve
L2960	R47267002	Expansion Valve
L2961	R47267003	Expansion Valve
L2962	R47267004	Expansion Valve
L2963	R47267005	Expansion Valve
L2964	R47267006	Expansion Valve
L2965	R47267007	Expansion Valve
L2966	R47267008	Expansion Valve
L4245	H2TXV01	Expansion Valve
L4246	H2TXV02	Expansion Valve
L4247	H2TXV03	Expansion Valve
L4260	ATXV479	Expansion Valve for Indoor Coils
L4261	31J32-01	Expansion Valve
L4290	A4TXV01	Expansion Valve
L4291	A4TXV02	Expansion Valve
L4292	H4TXV01	Expansion Valve
L4293	H4TXV02	Expansion Valve
L4294	H4TXV03	Expansion Valve
L4333	45831-008	Expansion Valve Assembly for SHP12E42A-2 & -3
L4334	45831-006	Expansion Valve Assembly for SHP12E48A-2 & -3
L4335	45831-012	Expansion Valve Assembly for SHP12E60 -2 & -3
L4762	44478-001	Expansion Valve for 1.5 - 3 Ton
L4763	44478-002	Expansion Valve for 3.5 - 5 Ton
L4766	42973-004	Expansion Valve for SHP12B36A-3 Heat Pump
L4769	42973-002	Expansion Valve f/ SHP12B60A-3 Heat Pump
L5705	42W42	Expansion Valve for 4SHP-14LE118P-1, 4SHP14LE124P-1, 4SHP14LE130P-1
L5706	33W85	Expansion Valve for 4HP13L36,42,48P-2A,-3A, 4HP14L36,42,48,60P-2A, 4SHP16LT136,148P-2
L5776	37570B014	Expansion Valve for SHP10C36
L5778	37570B011	Expansion Valve for SHP10C48
L5779	37570B012	Expansion Valve for SHP10C60

HVAC

Ar m s t r o n g P A r t s



ELECTRODE WIRES

Locke#	Armstrong#	Description
L4872	41520-002	Electrode Wire
L5892	42446-001	Electrode Wire
L5893	42694-004	Electrode Wire for Concord 80%

FAN BLADES

Locke#	Armstrong#	Description
L1002	44372-001	Fan Blade
L1005	45582-001	Fan Blade
L2763	R100060-21	Fan Blade (30W24)
L2939	R100687-01	Fan Blade 26" 3 Blade
L2940	R100265-01	Fan Blade 22" 2 Blade
L2947	R100060-03	Fan Blade 18" 3 Blade 27 Pitch
L2948	R100060-07	Fan Blade 18" 3 Blade 17 Pitch
L2949	R100060-08	Fan Blade 18" 4 Blade 27 Pitch
L2950	R100060-09	Fan Blade 18" 4 Blade 34 Pitch
L2951	R100060-10	Fan Blade 22" 4 Blade 32 Pitch
L2953	R100060-13	Fan Blade 22" 4 Blade 24 Pitch
L2954	R100060-16	Fan Blade 22" 3 Blade 20 Pitch
L2955	R100060-18	Fan Blade 22" 3 Blade 22 Pitch
L2956	R100060-19	Fan Blade 22" 3 Blade 27 Pitch
L4861	R39294B001	Fan Blade 3 Blade CW 18" 46W11
L4862	R41141-001	Fan Blade 4 Blade CW 18" 46K12
L4863	R41518-001	Fan Blade 4 Blade CW 20" 46K13
L4865	41353-001	Fan Blade 3 Blade CW 24"
L4866	41354-001	Fan Blade 4 Blade CW 18"
L4867	41355-001	Fan Blade 4 Blade CW 18"
L4871	42686-001	Fan Blade
L4873	42537-001	Fan Blade
L4938	R39227B001	Fan Blade for SC24-30 condensers
L4939	39228B001	Fan Blade for SC36-60 condensers
L4820	R47538-001	Fan Blade
L5861	85M50	Fan Blade

FILTER DRYER

Locke#	Armstrong#	Description
L4771	45778-001	Filter Dryer
L5959	39941B001	Dryer 46K86

FOSSIL FUEL KITS

Locke#	Armstrong#	Description
L4248	AFOSL500	Fossil Fuel Kit

GAS VALVES

Locke#	Armstrong#	Description
L0554	38320B001	Gas Valve For GHC & GRTC
L0882	37933B002	Electronic Ignition gas valve
L4553	45390-001	Gas Valve for Ultra V
L4789	43200-001	Gas Valve for G2D80AT & GUH80E
L4855	41516-001	Gas Valve For PGE & Concord
L4900	43799-001	Gas Valve for GRTC89 & GRTC119
L5840	47484-001	Gas Valve 1 Stage G1N B Furnaces
L5841	47484-002	Gas Valve 1 Stage B Furnaces
L5846	39514B003	Gas Valve for SX80-1
L5884	44479-001	Smart Valve III f/SX-80 & SX90 -2 to -4
L5838	47485-001	Gas Valve For G2D93 & 95B Furnaces

HEAT EXCHANGERS

Locke#	Armstrong#	Description
L5969	40622-005	150M BTU Heat Exchanger
L5976	06428D399	2 Burner Cover Kit
L5977	06428D400	3 Burner Cover Kit
L5978	06428D401	4 Burner Cover Kit
L5979	06428D402	5 Burner Cover Kit
L5982	S40622001	50,000 BTU Heat Exchanger
L5983	S40622003	100,000 BTU Heat Exchanger
L5984	S40622002	75,000 BTU Heat Exchanger
L5985	S40622004	125,000 BTU Heat Exchanger

HVAC



HEAT PUMP PARTS

Locke#	Armstrong#	Description
L1012	44610-001	Reversing Valve
L1013	47805-001	Reversing Valve
L1014	41099-001	Solenoid
L1015	47804-001	Reversing Valve
L1039	44614-002	Defrost Control
L2925	R100269-01	Defrost Control board
L4655	36327B006	Discharge Line Thermostat
L4747	46257-001	Defrost control for SHP10E, 12E, & 13E Heat Pumps
L4381	45032-001	Low Pressure Switch
L5762	44613-001	Reversing Valve
L2982	97M82	Reversing Valve
L2983	97M83	Reversing Valve
L2984	R100087-04	Reversing Valve

HEAT SENSORS

Locke#	Armstrong#	Description
L1045	36453B001	Heat Sensor

HEAT STRIPS

Locke#	Armstrong#	Description
L4310	14w36	15 kW Heat Strip for TCA036-048
L4311	14W47	22.5 kW Heat Strip for TCA060

HIGH PRESSURE SWITCH

Locke#	Armstrong#	Used in:
L2066	86M36	4SCU13LE118,124,130,136,142,148,160P-1 4SCU14LE118,124,130,136,142,148,160P-1 4SCU16LT124,136,148,160P-1 4SHP13LE118,124,130,136,142,148,160P-1 4SHP16LT124,136,148,160P-1 4SCU13LE118,124,130,136,142,148,160P-2 4SHP14LE118,124,130,136,142,148,160P-1 CONCORD 4AC13L18,24,30,36,42,48,60P-1A
L2068	42W41	13ACD-018-230-12; 4AC14L18P-2A; 4AC13L18P-2A, 3A, 4A, 5A; 4AC14L24P-2A; 4AC13L24P-2A, 3A, 5A; 4AC14L30P-2A; 4AC13L30P-2A, 3A, 5A; 4AC14L36P-2A; 4AC13L36P-2A, 3A, 4A, 5A; 4AC14L42P-2A, 3A; 4AC13L42P-2A, 3A, 4A, 5A; 4AC14L48P-2A, 3A; 4AC13L48P-2A, 3A, 4A, 5A; 4AC14L60P-2A, 3A; 4AC13L60P-2A, 3A, 4A, 5A

IGNITION CONTROLS

Locke#	Armstrong#	Description
L5860	17L96	Ignition Control for -2 Concord
L4908	21W14	Ignition control for TGA 3-25 Ton units
L1044	36524B001	Ignition Control
L0796	37400D085	Ignition Control for GRTC-2
L0398	38071D182	Replacement Ignition Control for GRTC-1
L5895	38071D220	Ignition Control for PGE-3 & -4 RA161-2
L0883	38691B001	Ignition Control for SX Furnace
L5765	38707B001	Ignition Control
L5852	42640-001	Ignition Sensor for SX2
L0366	43110-002	Ignition Control for GHC
L5856	43203-001	Hot Surface Ignitor
L5958	43207-001	Ignition Control for GU95
L4773	44744-002	Hot Surface Ignitor
L4790	44957-001	Ignition Control/Blower for GUH80E
L4904	44L59	Ignition Control for GCS16/20
L4783	45632-001	Circuit board for G2D95AC & AU
L5881	46994-101	Ignition Control for PGE10/12B-2
L5894	47582-001	Ignition Control B Furnace
L5839	47583-001	Ignition Control for G2D "B" models
L4548	47584-001	Variable Speed Ignition Control for G2D80BT, G2D95BC & G2D95BU
L4906	56M61	Ignition Control for GCS16-5 and later models
L4902	80K12	Ignition control f/ 200GRTC89 & 119-1-2-3
L2968	98M85	Ignitor for 2PGE13W & 4PGE15E
L5601	83M00	Surelight Replacement Kit: Ignition control, Circuit board & Wire Harness

HVAC

Ar m s t r o n g P A r t s



INDUCED DRAFT MOTORS

Locke#	Armstrong#	Description
L0990	37993C001	Gasket
L1007	43464-002	Induced Draft Blower Motor for G1 D90AH Furnaces
L1048	38266D001	Motor/assembly for GRTC 3-1/2-5ton
L1049	38391B001	Motor Gasket for GRTC 3-1/2 - 5 Ton
L2944	R100675-02	Induced draft motor
L4549	45403-002	Induced Draft Blower Motor forCG80 Furnaces
L4555	45037-001	Induced Draft Blower Motor forG1D91 Furnaces
L4649	39598B001	Motor Assembly for GRTC-2
L4716	43206-001	Induced Draft Blower Motor f/GH95
L4749	44431-001	Induced Draft Blwr Motor
L4791	44704-002	Induced Draft Blower Motor forGUH80E
L4854	42250-001	Motor for PGE 2 - 5 Ton 74K77
L5695	45889-001	Induced Draft Blower Motor for G2D95

LP KITS

Locke#	Armstrong#	Used In
L7960	72W47	A80 & 80G1 Single Stage Furnaces
L7971	68W76	A80 & 80G2 2 Stage Furnaces
L7961	68W75	A93 - A95 - 92G - 95G Furnaces
L7973	68W77	A96MV Furances

LIMIT SWITCHES

Locke#	Armstrong#	Description
L0374	02379A006	Fan and Limit Combo for EG6A, G6A, G7A & EG7A
L0384	36604B003	Fan and Limit Combo for EG8A & G8A 21W96
L0395	01150A007	Limit Control
L0891	40154B023	Limit Switch - Blue/Green
L4372	40154B017	Limit Switch for 125,000 & 150,000 BTU GRTC 36K28
L4374	40154B025	Limit Switch 130/100 Pink/Green
L4644	40923-010	Limit Switch for AH Heat Strip
L4658	46105B001	Limit Switch 150/120 Violet
L4659	40154B002	Limit Switch 160/130 Orange
L4660	40154B003	Limit Switch 165/135 Yellow
L4661	40154B004	Limit Switch 170/140 Green
L4662	40154B006	Limit Switch 180/150 Red
L4663	40154B007	Limit Switch 190/160 Pink
L4664	40154B008	Limit Switch 200/170 White
L4665	40154B009	Limit Switch 210/180 Gold
L4666	40154B012	Limit Switch 250/220 Yellow/White
L4667	40154B013	Limit Switch 155/125 Green/White
L4668	40154B014	Limit Switch 170/140 Blue/White
L4669	40154B015	Limit Switch 230/200 Red/White
L4670	40154B016	Limit Switch 215/185 Pink/White
L4676	42936-001	Hi-Temp Limit Switch
L4677	01851A028	Auxiliary Limit Switch Orange/White
L4856	01851A021	Auxiliary Limit Switch Gray
L4858	01851A027	Auxiliary Limit Switch Green
L4925	R110000245	Limit Switch 72K33
L5854	01851A007	Auxiliary Limit Switch Blue
L5855	01851A033	Auxiliary Limit Switch Yellow
L5957	30L01	Limit Switch for AHEF

LOW AMBIENT KIT

Locke#	Armstrong#	Description
L6777	34M72	For 4SCU13, 4SHP13, 4SHP16

HVAC

Ar m s t r o n g P A r t s



ORIFICES

Locke#	Armstrong#	Description
L4638	393328093	.093 Flowrator Orifice
L4637	393328090	.090 Flowrator Orifice
L5721	100484-35	.088 Flowrator Orifice
L4636	393328086	.086 Flowrator Orifice
L4635	393328084	.084 Flowrator Orifice
L5717	39332B082	.082 Flowrator Orifice
L4634	393328080	.080 Flowrator Orifice
L4633	393328078	.078 Flowrator Orifice
L4632	393328076	.076 Flowrator Orifice
L4631	393328074	.074 Flowrator Orifice
L4630	393328073	.073 Flowrator Orifice
L5720	39332B072	.072 Flowrator Orifice
L4619	393328071	.071 Flowrator Orifice
L4680	393328070	.070 Flowrator Orifice
L4629	393328068	.068 Flowrator Orifice
L4627	393328065	.065 Flowrator Orifice
L4679	393328063	.063 Flowrator Orifice
L4626	393328061	.061 Flowrator Orifice
L4624	393328057	.057 Flowrator Orifice
L4622	393328055	.055 Flowrator Orifice

PILOT ASSEMBLIES

Locke#	Armstrong#	Description
L1023	36447B001	Electrode Pilot Assembly
L4657	40406007	Pilot Assembly for SX Furnaces
L5890	42495B001	Pilot Assembly for SX-2 Furnaces

PRESSURE SWITCHES

Locke#	Armstrong#	Description
L2911	100087-06	Low Pressure Switch (40 PSI)
L4118	45694-001	.50 Pressure Switch WHITE
L4119	45694-002	.60 Pressure switch RED
L4120	40405-008	.50 Pressure Switch
L4384	45697-001	White / Red Pressure Switch
L4385	45697-002	White / Blue Pressure Switch
L4547	45694-008	.45 PINK Pressure Switch PINK
L4642	45694-005	.70 Pressure switch WHITE
L4643	43336-007	.80 Pressure switch GRAY
L4698	44819-001	.25 Pressure switch PURPLE
L4720	45694-006	.40 Pressure switch LIGHT BLUE
L4927	45694-011	.55 Pressure Switch
L4928	45694-004	.65 Pressure Switch
L4796	44820-002	Pressure switch WHITE
L4799	45695-009	Pressure switch ORANGE
L4859	40405-009	.30 Pressure switch ORANGE
L4882	45694-003	Pressure switch YELLOW
L4930	45695-002	.45 Pressure Switch BLUE
L4931	45695-003	.60 Pressure Switch BROWN
L4932	45695-004	.70 Pressure Switch GREEN
L4933	45695-005	.50 Pressure Switch PURPLE
L4934	45696-001	.60 Pressure Switch GRAY
L4935	45696-002	.70 Pressure Switch ORANGE
L4950	R45695-010	.85 Pressure Switch
L5896	44391-004	23" Pressure Switch Tubing

RELAYS

Locke#	Armstrong#	USED IN:
L2952	R102248-01	RPGE13A24050P-1, RPGE13A24075P-1, RPGE13A30075P-1, RPGE13A36075P-1, RPGE13A36100P-1, -2, RPGE13A42100P-1, -2, RPGE13A48125P-1, -2, RPGE13A60125P-1, -2

RETURN AIR BASES

Locke#	Armstrong#	Size
L7967	68W63	21"
L7968	68W64	24.5"

HVAC

REVERSING VALVE

Locke#	Armstrong#	USED IN:
L5604	98M43	2SHP13LB160P, 2SHP13LE160P, 2PHP13E60P, 4PHP13E60P, 4PHP15E60P, 4SHP18LT148-160P
L5836	R100145-01 (95M91)	2HP13L30P-1A/B, 2PHP13E24P-1, 2PHP13E30P-1, 4PHP13E24P-1, 4PHP13E30P-1, 4PHP15E24P-1, 4PHP15E30P-1 Units

ROLLOUT / FLUE STACK SWITCHES

Locke#	Armstrong#	Description
L5065	37520B012	Blue L175-MR
L5066	37520B009	Black L300-MR
L5067	R37520B018	Rollout Switch
L5090	37520B004	Red L350-MR
L5091	37520B005	Green L400-MR
L5092	37520B001	White L275-MR
L5696	37520B013	Pink L250-MR
L5697	37520B014	Green L204-MR
L5698	37520B015	Red L350-MR
L5699	37520B016	Orange L275-MR
L5891	37520B002	Yellow L225-MR

SENSOR & ELECTRODE

Locke#	Armstrong#	Description
L0381	39342B001	Flame Sensor for GHC
L0387	39050B001	DSI Electrode for GHC
L0793	40663-001	Sensor & Electrode for SX 80& 90 Furnaces
L0884	38492B001	Flame Sensor
L1042	43127-001	Flame Sensor for GU95
L4748	44745-001	Flame Sensor for Concord 3
L5844	45708-002	Flame Sensor - Single Prong
L5892	42446-001	Sensor & Electrode Wire

SEQUENCERS

Locke#	Armstrong#	Description
L0522	37883B001	Sequencer for GRTC
L4788	44352-008	Sequencer for AHEF Heat Strip
L4686	40923-009	Time Delay Relay for AHSA Heat strips
L0523	33191A001	Time Delay Relay for GRTC
L5931	44350-006	Time Delay Relay for EFC
L4926	40923-007	Sequencer
L5888	40715-001	Time Delay Relay

SERVICE REFERENCE HANDBOOKS

Locke#	Armstrong#	Description
M5010	SRH-GUJ/GCJ/GHJ	Handbook for GUJ, GCJ, & GHJ furnaces
M5011	SRH-G1N80	Handbook for G1 N80 furnaces
M5012	SRH-G1D91/93	Handbook for G1D91 & 93 furnaces
M5013	SRH-G2D95	Handbook for G2D95AC & AU furnaces
M5014	SRH-GUK/GU93	Handbook for GUK/GU93 furnaces
M5015	SRH-GCK/GC93	Handbook for GCK/GC93 furnaces
M5016	SRH-GU95	Handbook for GU95SRH-GU95
M5017	SHR-SCU	Handbook for SCU SHR-SCU furnaces
M5018	SRH-SHP	Handbook for SHP10C-E furnaces

SERVICE VALVES

Locke#	Armstrong#	Description
L1076	45492-001	Liquid Line Service Valve 3/8" for CCU10 & 12
L1081	41476-004	3/8" Liquid Line Service Valve
L1082	41476-005	3/4" Suction Line Service Valve
L1083	41476-006	7/8" Suction Line Service Valve
L1077	45493-001	Suction Line Service Valve 3/4" for CCU10 & 12 (1 1/2 to 2 1/2 Ton)
L1008	8923B002	5/8" Service Valve
L2980	10W32	3/8" Service Valve
L2981	10W33	3/4" Service Valve



START ASSIST DEVICE

Locke#	Armstrong#	Description
L4609	45063-001	Start Assist Device for CCU & SCU10A Condensing Units

THERMAL FUSE

Locke#	Armstrong#	Description
L4115	RS45922-001	5 Amp Fuse (package of 12)
L4774	40923-011	Thermal Fuse for AHSA HeatStrips, fits 5-20 KW

THERMOSTATS & TWINNING KIT

Locke#	Armstrong#	Description
L2926	R100503-04	Defrost Thermostat
L2927	R100503-03	Defrost Thermostat

TRANSFORMERS

Locke#	Armstrong#	Description
L1071	38491B001	Transformer for 80% Furnaces
L4648	39370B001	Transformer for MB Airhandler
L5882	43211-001	Transformer for GU95 Furnace
L5930	44350-003	Transformer for EFC & EFV

TRANSFORMER/RELAY

Locke#	Armstrong#	Description
L2967	R76700452	Time Delay Relay
L4309	36634C002	Fan control center relay & transformer
L5882	3211-001	Transformer for GU95

VARIABLE SPEED MOTORS WITH CONTROL

Locke#	Armstrong#	Used In:
L5874	R46132-024	L6725 RPGE13A24075P-1
L5875	R46132-025	L6726 RPGE13A30075P-1
L5864	R46132-021	RPGE13A42075P-1, -2

WIRING HARNESS

Locke#	Armstrong#	Description
L4815	45408-001	Wiring Harness for G1N80AT and CG80TA
L5835	R101673-02 (41W93)	Used in: 2AC13L42P-2A, 2AC13L48P-2A, 2AC13L60P-2A, 4HP13L36P-1A, 4HP13L42P-1A, 4HP13L48P-1A, 4HP13L60P-1A Units
L5700	26W43	Used in: 2SCU13LB124,130,136P-3 2SCU13LE124,130,136P-3

LATEST CROSS REFERENCE OF COPELAND COMPRESSOR PLUGS FOR ARMSTRONG UNITS

When replacing Copeland compressors in Armstrong units, it is sometimes necessary to use a compressor plug to adapt the compressor to the unit. There are different plugs for condensers, heat pumps and packaged units.

COMPRESSOR PLUGS

Locke#	Copeland Code	Plug	Armstrong Part No.	Application
L0803	CR22K6-PFV	L4740	42725-001	Condenser & Heat Pump
L4683	CR28KF-PFV-130	L4740	42725-001	Condenser & Heat Pump
L4684	CR34KF-PFV-130	L4740	42725-001	Condenser & Heat Pump
L4724	ZR24KC-PFV-130	L4740	42725-001	Condenser & Heat Pump
L4725	ZR28KC-PFV-130	L4740	42725-001	Condenser & Heat Pump
L4726	ZR34KC-PFV-130	L4740	42725-001	Condenser & Heat Pump
L4874	CR22KF-PFV-170	L4740	42725-001	Condenser & Heat Pump
L4874	CR22KF-PFV-170	L4742	42725-003	Packaged Unit
L5766	ZR57KC-TF5	L4744	42725-005	Packaged Unit
L5767	ZR72KC-TF5	L4744	42725-005	Packaged Unit

Here is a list of criteria to help you determine which plug a Copeland Compressor needs. Note that there are variations that don't fit these criteria.

For model numbers ending in -130 or -135, use:

L4740	42725-001	1-1/2 to 2-1/2 Tons
-------	-----------	---------------------

L4740 is a round plug.

For model numbers ending in -230, use:

L4744	42725-005	3 to 5 Tons
-------	-----------	-------------

L4744 has three 1/4" disconnects.

For 3 phase models, use:

L4742	42725-003	1-1/2 to 5 Tons
-------	-----------	-----------------

COMPRESSORS

Locke#	Armstrong#	Manufacturer Part Number	Tonnage	PH	Armstrong Condenser
--------	------------	--------------------------	---------	----	---------------------

Tecumseh

L0759	35110B001	Tecumseh CRC1-0175PFV-270	2 Ton	1	PE24S & PEO24S
L0762	38867B001	Tecumseh AV5546H	4 Ton	1	AMSB485A-1
L0894	38867B002	Tecumseh AV5549G	4 Ton	1	SCU10A48A & RC10A48A
L0938	38867B005	Tecumseh AVB5558EXN	5 Ton	1	SCU10A60A, PGE10A60D150A1, CJK60S, & PE060S
L4611	35125C010	Tecumseh AW5516EXN	1.5 Ton	1	RC10B18A
L4688	38867B003	Tecumseh AV5549G	4 Ton	3	SCU10A48B, PCE10A48DB & RC1048B
L4700	38867B006	Tecumseh AVB5558EXT	5 Ton	3	SCU10A60B & PGE10A60150B1
L4701	38867B014	Tecumseh AVD5558EXG	5 Ton	3	(460v) SCU10B60C
L4728	43384-001	Tecumseh AV150ET-041-A4	4 Ton	1	RH10A48A-1
L5751	35125C006	Tecumseh AW5517G	1.5 Ton	1	SHP10A18A-1 & PE18S
L5752	35125C007	Tecumseh AW5522G	2 Ton	1	SHP10A24 & SHP10B24A-1
L5753	35125C008	Tecumseh AW5528G	1.5 Ton	1	SHP10A30A & SHP10B30A-1
L5754	40057B001	Tecumseh AV5533G	3 Ton	1	SHP10A36A & SHP10B36A-1
L0874	38867B020	Tecumseh AV161-ET-041-B4	4 Ton	1	CCU10A48A
L0875	38667B023	Tecumseh AV196-ET-047-B4	5 Ton	1	CCU10A60A

Copeland

L0803	38863C002	Copeland CR22K6-PFV-260	2 Ton	1	CJK241S, SB24SA, PGE10A24D050A, PGE10A24D075A, PHP10A24DA, PCE10A24DA, SCU10A24A, & TCD24S
L2058	11W93	Copeland CR24K7-PFV-130	2 Ton		2AC13L30P-1A, 2B
L2059	11W93	Copeland CR31K7-PFV-130	2.5 Ton		2AC13L36P-1A, 2B
L0805	38865C003	Copeland CR35K6-PFV-260	3 Ton	1	SB36SA, CJK36S & CJK361S
L0806	38866C004	Copeland CR42K6-PFV-260	3.5 Ton	1	CJK42S, CJK481S, SB42SA, ACD42S, & TCD42S
L4683	42520-003	Copeland CR28KF-PFV-130	2.5 Ton	1	RC10A30A & SCU10A30A-3
L4684	42520-004	Copeland CR34KF-PFV-130	3 Ton	1	RC10A36A & SCU10A36A-3
L4685	39594C005	Copeland CR38K6-PFV-130	3.5 Ton	1	RC10A42A & SCU10A42A-3
L4729	38865C007	Copeland CR35K6- TF5	3 Ton	3	SCU10A36B
L4874	42520-005	Copeland CR22KF-PFV-170	2 Ton	1	RH10A24A
L5735	29M24	Copeland CRP5-0450- TFD-970	5 Ton	3	(460V) GCS16-060-120G
L5755	39594C001	Copeland CR38K6PFV270	3.5 Ton	1	CJK482S, SHP10A42A, SCU10A42A-2, SHP10B42A-1 & PHP10A42A
L0878	65G78	Copeland CRN-500-TF5	5 Ton	3	CHA16-120Y

Copeland R410A Compressors

Locke#	Armstrong#	Manufacturer Part Number	Armstrong Condenser
L2801	92M46	ZPS20K4E-PVF	4SCU16LT124P, 4SHP16LT124P, 4SCU18LT124P, 4SHP18LT124P
L2802	92M47	ZPS30K4E-130	4SCU16LT136P, 4SCU18LT136P-1, 4SHP16LT-136P, 4SHP16LT136P-2, 4SHP18LT136P-1
L2803	92M48	ZPS40K4E-130	4SCU16LT148P, 4SCU18LT148P-1, 4SHP16LT-148P, 4SHP16LT148P-2, 4SHP18LT148P-1
L2972	97M52	ZP16K5E-PFV	
L2973	97M53	ZP20K5E-PFV	
L2974	97M54	ZP25K5E-PFV	
L2975	97M55	ZP31K5E-PFV	
L2976	97M56	ZP36K5E-PFV	
L2977	97M57	ZP42K5E-PFV	
L2978	97M58	ZP54K5E-PFV	
L2979	92M49	ZPS51K4EPFV830	4SCU16LT160P-1, 4SHP16LT160P-1, 4SCU18LT160P-1, 4SHP18LT160P-1
L6534	53W14	APA016KAA	4AC13B18P-3A, 4HP13L18P-3A
L6535	52W10	APA020KAA	4AC13L24P-3A, 4HP13L24P-3A
L6536	52W33	APA026KAA	4AC13L30P-3A
L6537	43W86	APA032KAA	4AC13L36P-3A, 4HP13L36P-3A, 4SCU13LE136P-3
L6538	52W44	APA036KAA	4AC13L42P-3A
L6539	52W11	APA042KAA	4AC13L48P-3A
L6540	43W87	APA054KAA	4AC13L60P-3A

sCr oLL ComPr sso r s

ZR Scroll Compressors

Locke#	Armstrong#	Copeland Part Number	Tonnage	PH	Works with Armstrong Condenser
L2039	42811-001	ZR18KC-PFV-130	1½ Ton		SHP10E18A-1
L2040	42811-003	ZR30KC-PFV-130	2½ Ton		SHP10E30A-1
L2045	41579-023	ZR22K4-PFV-130	2 Ton		SHP12E24A-1; SCU12E24A-1
L2047	40478-017	ZR54K3-PFV-130	5 Ton		SHP12E60A-1; SHP13E60A-1 SCU12E60A-1
L2049	40478-018	ZR47K3-PFV-135	4 Ton		SHP13E48A-1
L2050	41579-022	ZR16K4-PFV-130	1½ Ton		SCU12E18A-1
L2051	41579-017	ZR32K3-PFV-130	3 Ton		SCU12E36A-1; SCU13E36A-1
L2052	41579-020	ZR40K3-PFV-130	3½ Ton		SCU12E42A-1
L2053	R100052-06	ZR42KA-PFV-830	3.5 Ton		2AC13L48P-A, 2PGE13E48138P-1, 2SCU13LB148P-1, 2SCU13LE178P-1
L2057	89M20	ZR21KA-PFV	2 Ton		2AC13L24, 2SCU13LB/LE124, 2PGE13E24068P, 2PCE13E24P
L2060	17W09	ZR26K3-PFV-130	2.5 Ton		2PHP13L30P
L2061	97M92	ZR48K3-PFV-130	4 Ton		2SCU/SHP14LE160P-1, 2SHP13LB160P-1, 2SHP13LE160P-1, 2PGE13E60138P-1, 2PCE13E60P-1, 2PHP13E60P-1, 2HP13L60P
L2062	89M21	ZR26KA-PFV	2.5 Ton		2SCU13LB130P-1, 2SCU13LE130P-1, 2SCU14LE130P-1, 2PGE13E30068P-1, 2PCE13E30P-1
L2064	89M22	ZR16KA-PFV	3 Ton		2SCU13LB136P-1, 2SCU13LE136P-1, 2PGE13E36068P-1, 2PGE13E36090P-1, 2PCE13E36P-1
L2065	89M19	ZR16KA-PFV	1.5 Ton		2AC13L18P-1A, 2SCU13LB118P-1, 2SCU13LE118P-1, 2SCU14LE118P-1, 2SCU14LE124P-1
L2908	15W21	ZR32KATF5-130	3 Ton	3	2SCU13LB136T, 2SCU13LB136T-2
L2909	23W95	ZR42KATF5-130	4 Ton	3	2AC13L148T, 2SCU13LB148T-2
L2910	15W25	ZR54KATF5-130	5 Ton	3	2SCU13LB160T
L4095	18L28	ZR45KCTF5-235	3.5 Ton	3	
L4687	41738-003	ZR61 KC-PFV-230	5 Ton	1	PHP10A60DA, RC10A60A, & SHP10C60A-3 SCU10E60A-1
L4694	41738-004	ZR61 KC- TF5-230	5 Ton	3	PHP10A60D0B & RC10A60B
L4706	41579-008	ZR30K3-PFV-230	2½ Ton	1	SCU13A24A
L4708	42811-004	ZR36KC-PFV	3 Ton	1	SHP10E36A-1
L4710	41579-007	ZR40K3-PFV-230	3½ Ton	1	SCU12A42A-3
L4711	42811-010	ZR45KC-PFV-135	3½ Ton	1	SCU10E48A-1
L4722	42811-024	ZR49KC-TF5-230	4 Ton	3	SHP10C48B-3
L4724	42811-005	ZR24KC-PFV-130	2 Ton		SCU10E24A-1
L4725	42811-006	ZR28KC-PFV-130	2½ Ton		SCU10E30A-1
L4726	42811-018	ZR34KC-PFV-130	3 Ton		SCU10E36A-1
L4727	42811-019	ZR42KC-PFV-130	3½ Ton		SCU10E42A-1
L5734	80K32-01	ZR47KC-TFD-935	4 Ton	3	(460V) GCS16-048-120G
L5756	99K43	ZR94KC-PF5-950	7 Ton	3	HP29-090, HS29-090, HS29180-240
L5766	42811-008	ZR57KC-TF5	5 Ton	3	PCE10C60-DB3
L5767	42811-009	ZR72KC-TF5	6 Ton	3	PGE10C72D100B-4
L5768	42811-007	ZR57KC-PFV	5 Ton		PGE10BD-150A-1
L2046	89M25	ZR54KA-PFV-830		1	2SCU13LE160P and -1, 2SCU13LB160P



HVAC

ACCESSORIES

L2055	44716-002	Sound Blanket for Scroll Compressor
L2056	39408C002	Crankcase Heater for Scroll compressor



AIR CONDITIONING/HEAT PUMP COMPRESSORS

Single Phase 230/208v 60hz R-22



Locke#	Model #	Mount	CCH	BTU	Tube Suction	Size ID Discharge	Ship. Wt. Lbs.
L4681	H23B153ABCA	Square 7.5" x 7.5"	No	For Armstrong Condenser RC10A18A & SCU10A18A-1			
L6000	H29B18UABCA		No	19,450	1/2	3/5	57
L6001	H29B24UABCA		No	24,100	1/2	3/8	62
L6002	H29B28UABCA		No	28,250	5/8	3/8	64
L6004	H23A423ABCA		Yes	42,300	3/4	3/8	84
L6009	H29B32UABCA		Yes	32,600	5/8	3/8	77
L6010	H29B35UABCA		Yes	35,600	3/4	3/8	79
L6011	H23A383ABCA		Yes	38,200	3/4	3/8	82
L6012	H23A463ABCA		Yes	46,500	7/8	1/2	85
L6013	H23A543ABCA		Yes	55,100	7/8	1/2	96
L6014	H23A623ABCA		Yes	62,600	7/8	1/2	100

Three Phase 60hz R-22

Locke#	Model #	BTU	Mount	CCH	Voltage	Tube Suction	Size ID Discharge	Ship. Wt. Lbs.
L6020	H23A463DBLA	46,500	Sq	Yes	230/208	7/8	1/2	82
L6021	H23A623DBLA	62,000	Sq	Yes	230/200	7/8	1/2	94



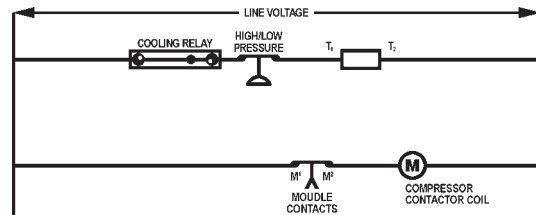
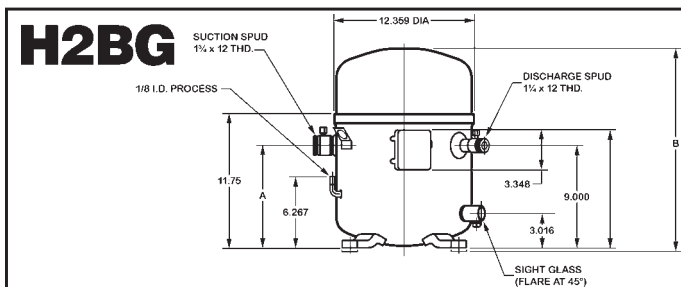
H2BG SERIES COMPRESSORS

300 BTU/HR, 3 Phase 60 Hz Single Speed, R22 Refrigerant

Locke#	Model	Tonnage	Motor Input (Watts)	EER BTU/W	Volt/Amp 208/230V	LRA 208/230V	MCC 208/230V	R22 Oil Charge (PTS)	Initial Oil Charge (PTS)	Oil Recharge (PTS)	Disp. Cubic Inch.
L6042	H2BG094DBDE	7½	8,690	10.0	35.3	140	38	15	7	6	10.21

"G" Series Dimensions, Valves, Adapters and Weights

Locke#	Model	Dimensions in Inches							Suction			Discharge			Weight	
		A	B	C	D	E	F	G	Valve Part No.	Adapter Part No.	Tube Size OD	Valve Part No.	Adapter Part No.	Tube Size OD	Net	Ship Wt.
L6042	H2BG094DBDE	17.1	12.5	8	8.7	9	9	9.5	250508	250510	1-1/8	250507	250509	7/8	153	156



Voltage to the compressor coil, M1 - M2 can be different from power rating of T1 - T2.
Voltage to T1 - T2 must be as marked on module.

5-2-1 COMPRESSOR SAVER

The 5-2-1 Compressor Saver has been pre-wired for your convenience. There are only 3 color coded wires which need to be connected. The Black wire will be connected to the Common side of the compressor. The Striped wire will be connected to the Start winding of the compressor and the Red wire will be connected to the Run winding of the compressor.

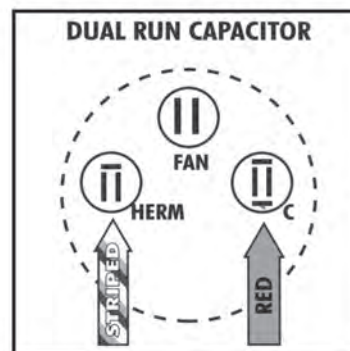
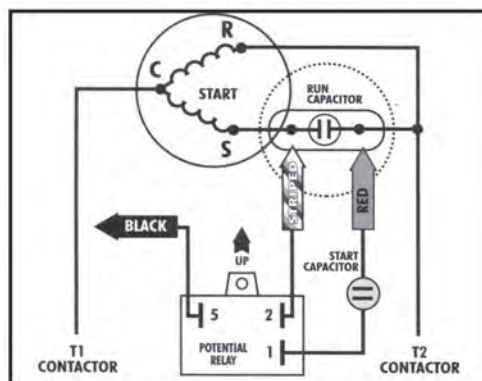
Remember - 5,2,1 = Common, Start, Run

Locke#

L0406 CSRU1 For 1-3 Ton Scroll

L0407 CSRU2 For 3-5 Ton Scroll

L0408 CSR5 For 4-5 Ton Scroll



TERM-LOK Manufacturing Co.

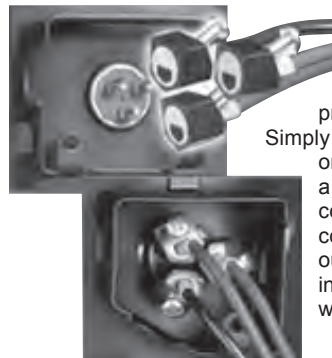


- A precision brass cylinder
- Wires are permanently attached
- Stainless steel set screws
- Standard factory 600V 65 strand machine wire
- Set for three color coded wires
- Easy to install
- Application wrench included
- Guaranteed for the life of the compressor

Locke#

L6049 TLC-3-10 Compressor Repair Kit

QWIKLUG™ 2' TERMINAL REPAIR KIT



Tightens quickly from the front with a Phillips head screwdriver. Has a durable brass interior shielded by nylon exterior to prevent shorting.

Simply push the QwikLug™ connector on and tighten it from the front with a Phillips screwdriver. QwikLug™ comes with color coded leads for connecting to existing wiring. The outer connector housing is a nylon insulator so the connectors can touch without shorting.

Locke#

M3326 QT2810 2' Terminal Repair Kit